

MARTEAU \exists

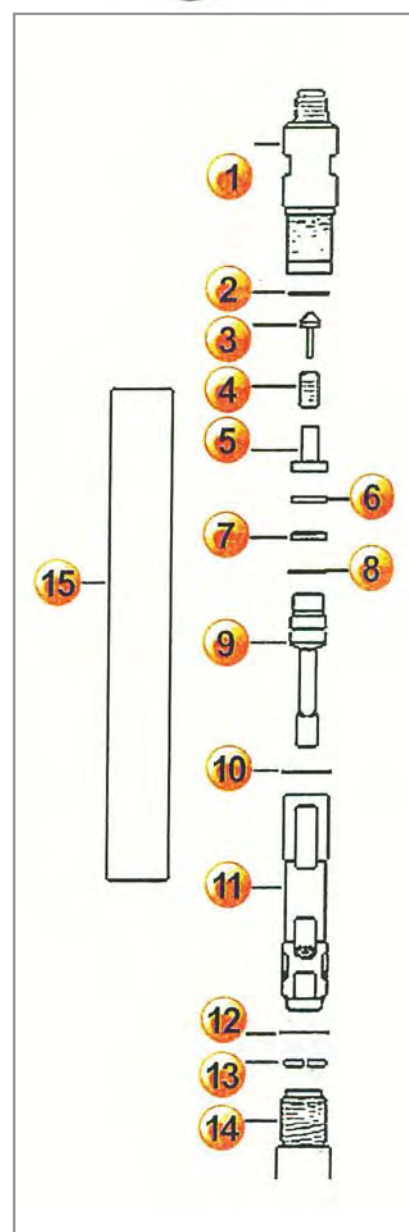
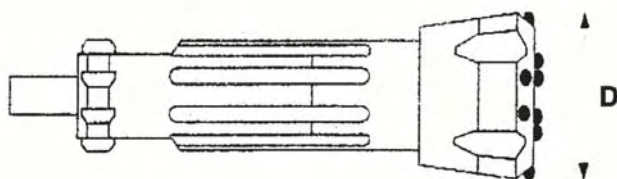
PMK 300

PMK 300



SPÉCIFICATION MARTEAU		CONSOMMATION D'AIR			
POIDS	20 KG	PSI	BAR	CFM	M³/min
LONGUEUR	833 mm	150	10,3	95	2,6
Ø EXTÉR. DU CYLINDRE	78 mm	200	13,8	150	4,3
PRESSION MAX. DE TRAVAIL	24 BAR	250	17,2	210	5,9
FILTAGE MÂLE	2"3/8 API REG	300	20,7	280	7,8
		350	24,0	325	9,2

EMMANCHEMENT - I.R. DHD 3,5



REPERE	DESCRIPTION	RÉFÉRENCE N°
1	BACKHEAD	OC-01-03
2	O-RING	OC-02-03
3	N.R.VALVE	OC-03-03
4	N.R.V. SPRING	OC-04-03
5	AIR DISTRIBUTOR	OC-05-03
6	SPACER	OC-06-03
7	SPRING B.	OC-07-03
8	O-RING	OC-08-03
9	CONTROL TUBE	OC-09-03
10	SEGER	OC-10-03
11	PISTON	OC-11-03
12	RETAINING RING	OC-12-03
13	BIT RETAINING RING	OC-13-03
14	CHUCK	OC-14-03
15	CYLINDER	OC-15-03

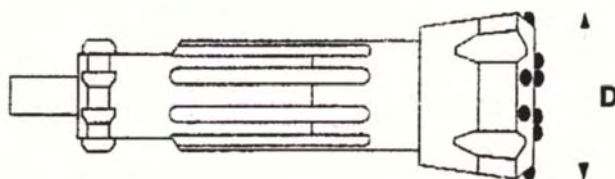
Autres emmanchements sur demande

MARTEAU 4 COURT
PMK 400

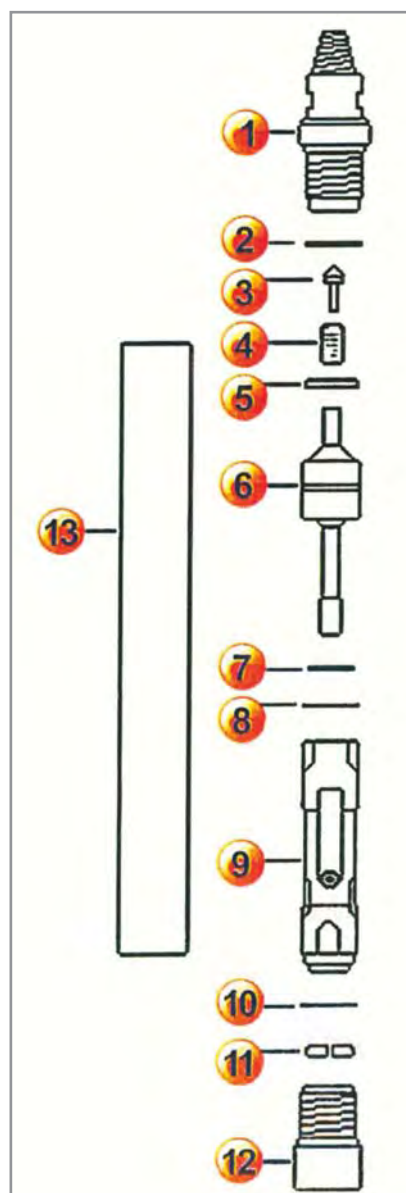
PMK 400



SPÉCIFICATION MARTEAU		CONSOMMATION D'AIR			
POIDS	30 KG	PSI	BAR	CFM	M ³ /min
LONGUEUR	675 mm	150	10,3	210	5,9
Ø EXTÉR. DU CYLINDRE	98 mm	200	13,8	300	8,2
PRESSION MAX. DE TRAVAIL	24 BAR	250	17,2	420	12,0
FILTAGÉ MÂLE	2"3/8 API REG	300	20,7	510	14,8
		350	24,0	600	17,6

EMMANCHEMENT - I.R. DHD 340/COP 44/SD 4


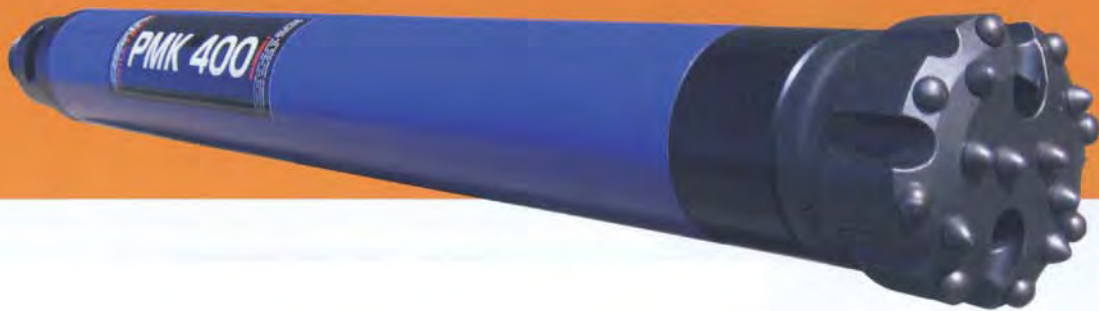
REPÈRE	DESCRIPTION	RÉFÉRENCE N°
1	BACKHEAD	OC-01-04
2	O-RING	OC-02-04
3	CHECK VALVE	OC-03-04
4	VALVE SPRING	OC-04-04
5	SPRING B	OC-05-04
6	CONTROL TUBE	OC-06-04
7	O-RING	OC-07-04
8	RETAINING RING	OC-08-04
9	PISTON	OC-09-04
10	RETAINING RING	OC-10-04
11	BIT RETAINING RING	OC-11-04
12	CHUCK	OC-12-04
13	CYLINDER	OC-13-04



MARTEAU 4

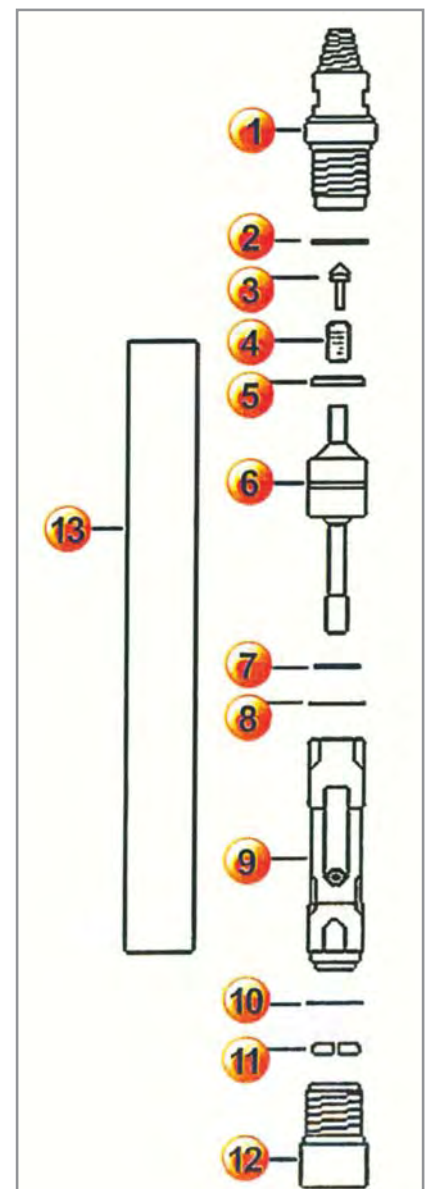
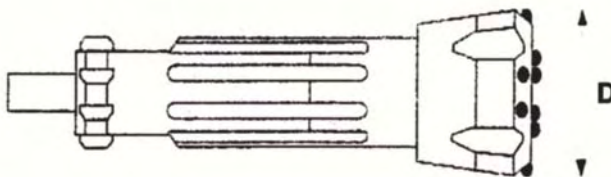
PMK 400

PMK 400



SPÉCIFICATION MARTEAU		CONSOMMATION D'AIR			
POIDS	40 KG	PSI	BAR	CFM	M ³ /min
LONGUEUR	978 mm	150	10,3	210	5,9
Ø EXTÉR. DU CYLINDRE	98 mm	200	13,8	300	8,2
PRESSION MAX. DE TRAVAIL	24 BAR	250	17,2	420	12,0
FILTAGE MÂLE	2"3/8 API REG	300	20,7	510	14,8
		350	24,0	600	17,6

EMMANCHEMENT - I.R. DHD 340/COP 44/SD 4



REPERE	DESCRIPTION	RÉFÉRENCE N°
1	BACKHEAD	OC-01-04
2	O-RING	OC-02-04
3	CHECK VALVE	OC-03-04
4	VALVE SPRING	OC-04-04
5	SPRING B	OC-05-04
6	CONTROL TUBE	OC-06-04
7	O-RING	OC-07-04
8	RETAINING RING	OC-08-04
9	PISTON	OC-09-04
10	RETAINING RING	OC-10-04
11	BIT RETAINING RING	OC-11-04
12	CHUCK	OC-12-04
13	CYLINDER	OC-13-04

MARTEAU S

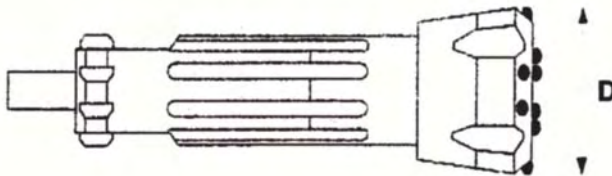
PMK 500

PMK 500



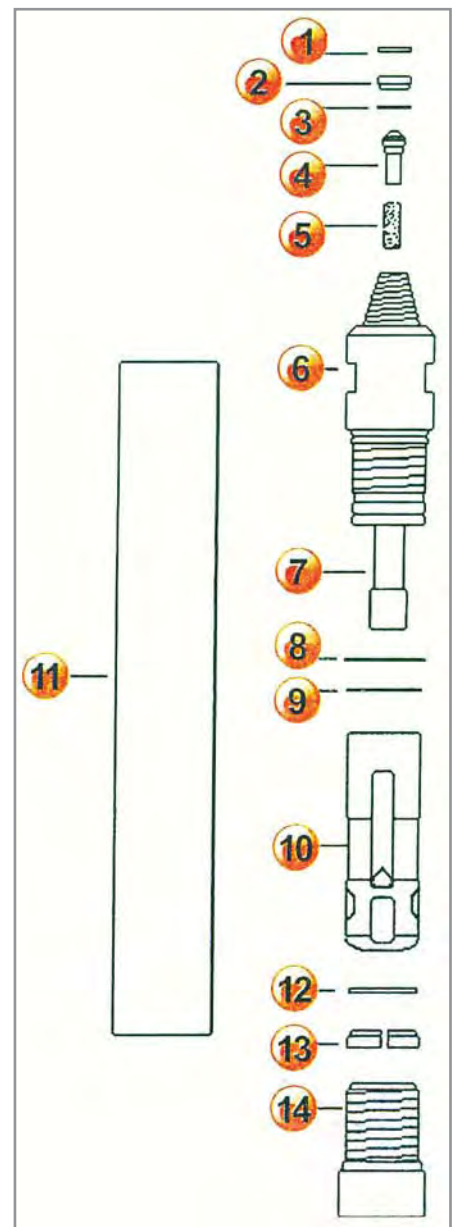
SPÉCIFICATION MARTEAU		CONSOMMATION D'AIR			
POIDS	65 KG	PSI	BAR	CFM	M³/min
LONGUEUR	970 mm	150	10,3	310	8,8
Ø EXTÉR. DU CYLINDRE	124 mm	200	13,8	421	11,8
PRESSION MAX. DE TRAVAIL	24 BAR	250	17,2	530	15,0
FILTAGE MÂLE	3"1/2 API REG	300	20,7	655	18,5
		350	24,0	780	22,0

EMMANCHEMENT - I.R. DHD 350 - SD 5/COP 54



REPÈRE	DESCRIPTION	RÉFÉRENCE N°
1	RETAINING RING	OC-01-05
2	N.R.V. SEAL	OC-02-05
3	O-RING	OC-03-05
4	CHECK VALVE	OC-04-05
5	VALVE SPRING	OC-05-05
6	BACKHEAD	OC-06-05
7	AIR DISTRIBUTOR	OC-07-05
8	O-RING	OC-08-05
9	O-RING	OC-09-05
10	PISTON	OC-10-05
11	CYLINDER	OC-11-05
12	RETAINING RING	OC-12-05
13	BIT RETAINING RING	OC-13-05
14	CHUCK	OC-14-05

Autres emmanchements sur demande



MARTEAU 6

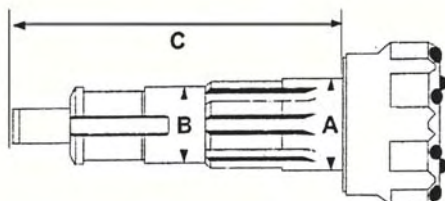
PMK 600

PMK 600

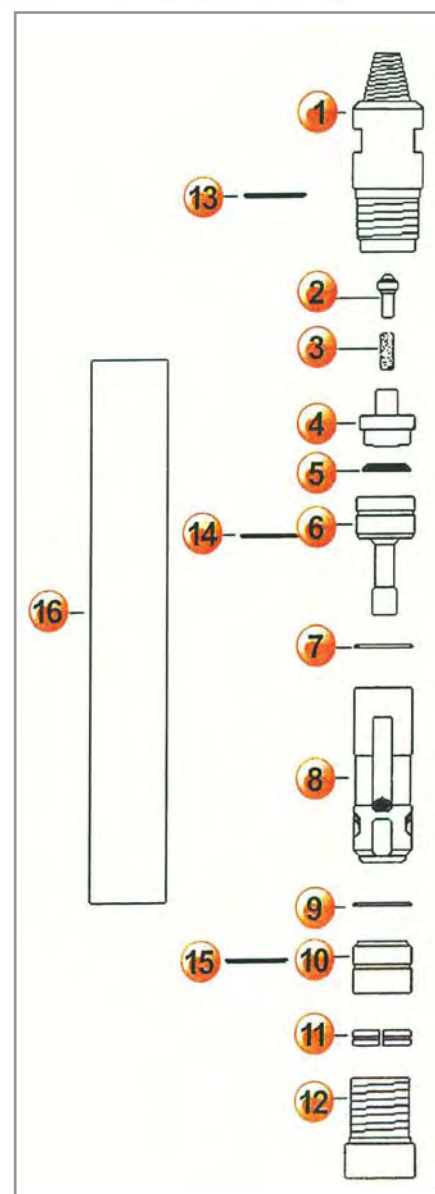


SPÉCIFICATION MARTEAU		CONSOMMATION D'AIR			
POIDS	106 KG	PSI	BAR	CFM	M ³ /min
LONGUEUR	1283 mm	150	10,3	329	9,31
Ø EXTÉR. DU CYLINDRE	145 mm	200	13,8	509	14,4
PRESSION MAX. DE TRAVAIL	24 BAR	250	17,2	707	20,0
FILTAGE MÂLE	3"1/2 API REG	300	20,7	930	26,3
		350	24,0	1034	38,0

EMMANCHEMENT - SD6/QL 60/DHD 360/COP 64



REPÈRE	DESCRIPTION	RÉFÉRENCE N°
1	BACKHEAD	OC-01-06
2	CHECK VALVE	OC-02-06
3	VALVE SPRING	OC-03-06
4	AIR DISTRIBUTOR	OC-04-06
5	SPRING B.	OC-05-06
6	CONTROL TUBE	OC-06-06
7	RETAINING RING	OC-07-06
8	PISTON	OC-08-06
9	RETAINING RING	OC-09-06
10	GUIDE BUSH	OC-10-06
11	BIT RETAINING RING	OC-11-06
12	CHUCK	OC-12-06
13	O-RING	OC-13-06
14	O-RING	OC-14-06
15	O-RING	OC-15-06
16	CYLINDER	OC-16-06



MARTEAU 8

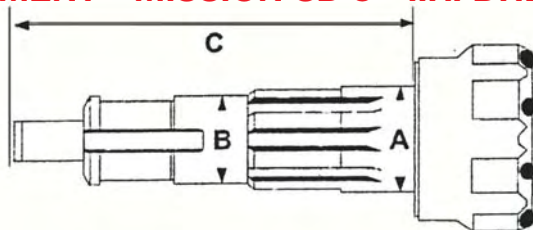
PMK 800

PMK 800

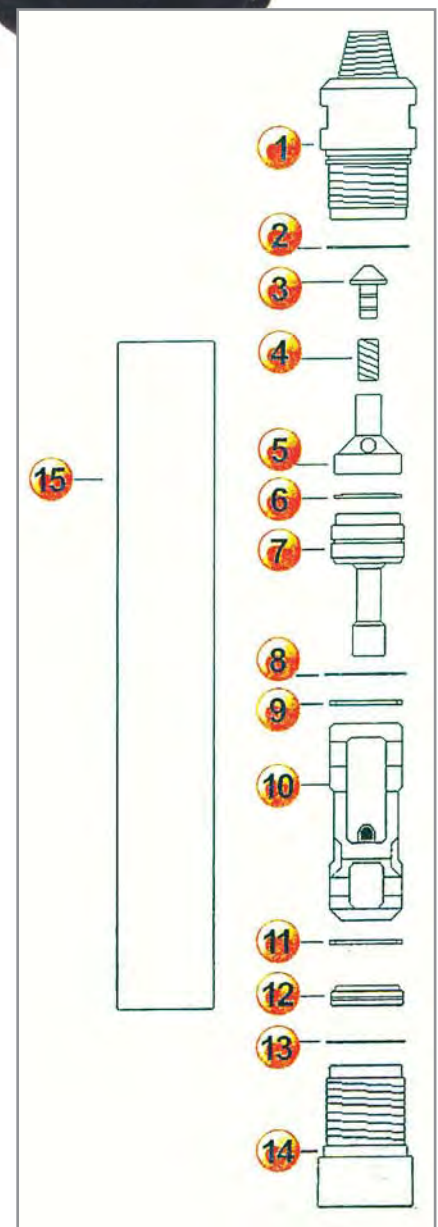


SPÉCIFICATION MARTEAU		CONSOMMATION D'AIR			
POIDS	170 KG	PSI	BAR	CFM	M ³ /min
LONGUEUR	1222 mm	150	10,3	500	14,3
Ø EXTÉR. DU CYLINDRE	175 mm	200	13,8	660	19,0
CYLINDRE RÉVERSIBLE	-	250	17,2	890	24,9
PRESSION MAX. DE TRAVAIL	24 BAR	300	20,7	1050	33,0
FILTAGE MÂLE	4" 1/2 API REG	350	24,0	1400	39

EMMANCHEMENT - MISSION SD 8 - I.R. DHD 380



REPÈRE	DESCRIPTION	RÉFÉRENCE N°
1	BACKHEAD	OC-01-08
2	O-RING	OC-02-08
3	CHECK VALVE	OC-03-08
4	VALVE SPRING	OC-04-08
5	AIR DISTRIBUTOR	OC-05-08
6	SPRING B.	OC-06-08
7	CONTROL TUBE	OC-07-08
8	O-RING	OC-08-08
9	RETAINING RING	OC-09-08
10	PISTON	OC-10-08
11	RETAINING RING	OC-11-08
12	BIT RETAINING RING	OC-12-08
13	O-RING	OC-13-08
14	CHUCK	OC-14-08
15	CYLINDER	OC-15-08



MARTEAU 8 RENFORC

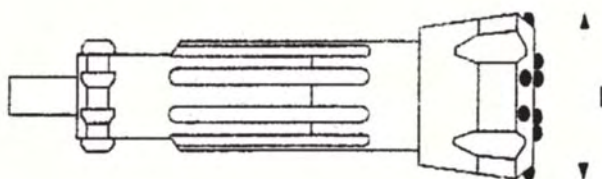
PMK 8005

PMK 8005

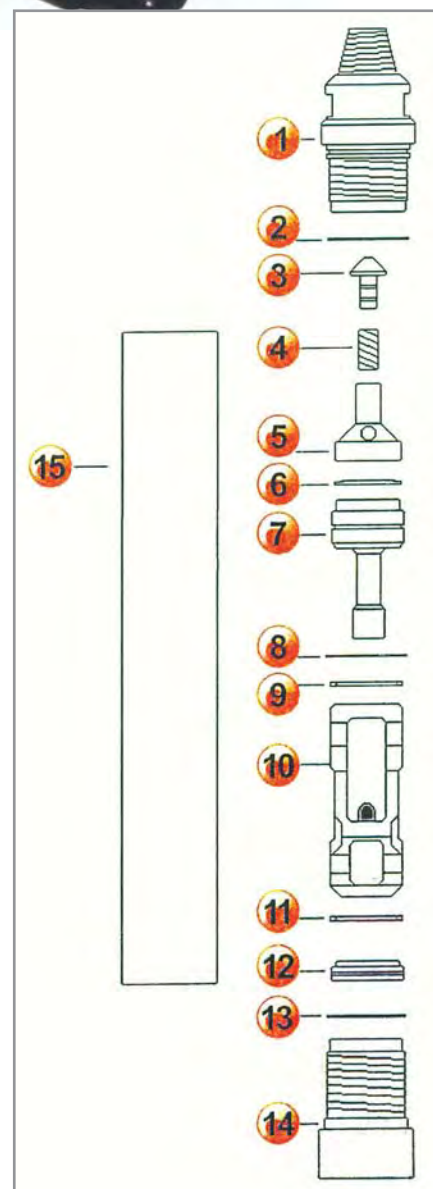


SPÉCIFICATION MARTEAU		CONSOMMATION D'AIR			
POIDS	194 KG	PSI	BAR	CFM	M ³ /min
LONGUEUR	1286 mm	150	10,3	479	13,5
Ø EXTÉR. DU CYLINDRE	185 mm	200	13,8	738	20,9
PRESSION MAX. DE TRAVAIL	24 BAR	250	17,2	1031	29,2
FILTAGE MÂLE	4"1/2 API REG	300	20,7	1355	38,4

EMMANCHEMENT - MISSION SD 8 - I.R. DHD 380



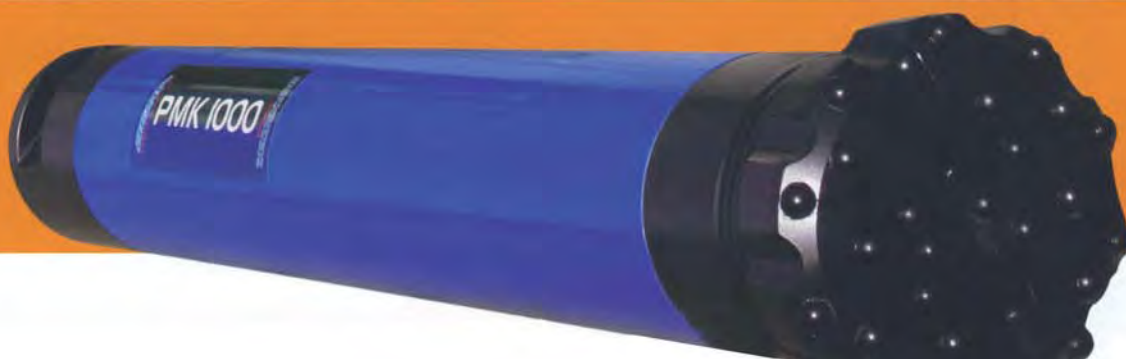
REPÈRE	DESCRIPTION	RÉFÉRENCE N°
1	BACKHEAD	OC-01-8S
2	O-RING	OC-02-8S
3	CHECK VALVE	OC-03-8S
4	VALVE SPRING	OC-04-8S
5	AIR DISTRIBUTOR	OC-05-8S
6	SPRING B.	OC-06-8S
7	CONTROL TUBE	OC-07-8S
8	O-RING	OC-08-8S
9	RETAINING RING	OC-09-8S
10	PISTON	OC-10-8S
11	RETAINING RING	OC-11-8S
12	BIT RETAINING RING	OC-12-8S
13	O-RING	OC-13-8S
14	CHUCK	OC-14-8S
15	CYLINDER	OC-15-8S



MARTEAU 10

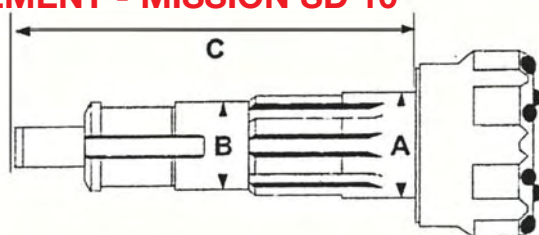
PMK 1000

PMK 1000

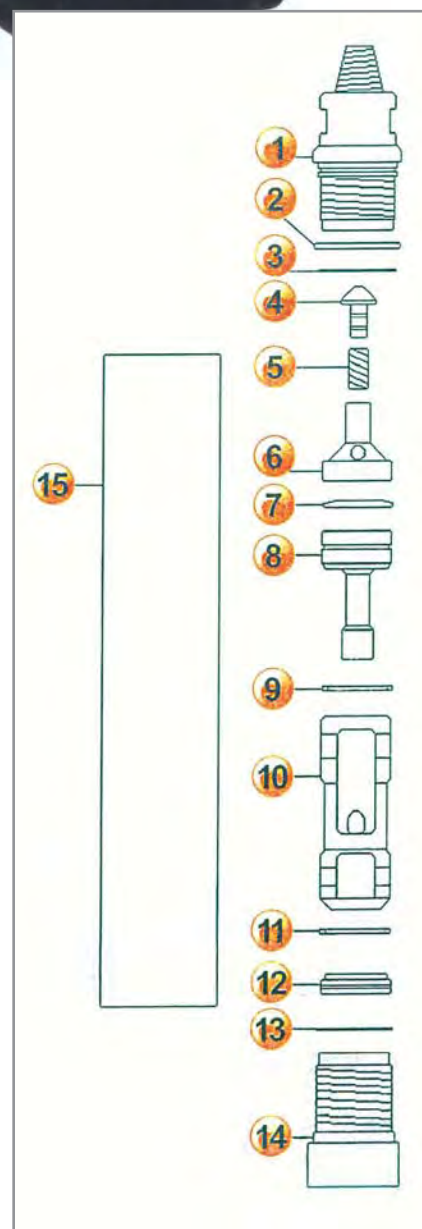


SPÉCIFICATION MARTEAU		CONSOMMATION D'AIR			
POIDS	388 KG	PSI	BAR	CFM	M ³ /min
LONGUEUR	1575 mm	150	10,3	672	19
Ø EXTÉR. DU CYLINDRE	225 mm	200	13,8	1034	38
Ø DE PISTON	175 mm	250	17,2	1445	41
POIDS DU PISTON	68 Kg	300	20,7	1900	54
COURSE DU PISTON	127 mm	350	24,0	2300	67

EMMANCHEMENT - MISSION SD 10



REPÈRE	DESCRIPTION	RÉFÉRENCE N°
1	BACKHEAD	OC-01-10
2	BREAKOUT WASHERS 2	OC-02-10
3	O-RING	OC-03-10
4	CHECK VALVE	OC-04-10
5	VALVE SPRING	OC-05-10
6	AIR DISTRIBUTOR	OC-06-10
7	SPRING B.	OC-07-10
8	CONTROL TUBE	OC-08-10
9	RETAINING RING	OC-09-10
10	PISTON	OC-10-10
11	RETAINING RING	OC-11-10
12	BIT RETAINING RING	OC-12-10
13	O-RING	OC-13-10
14	CHUCK	OC-14-10
15	CYLINDER	OC-15-10



MARTEAU 12

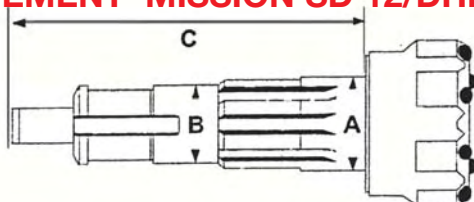
PMK 1200

PMK 1200

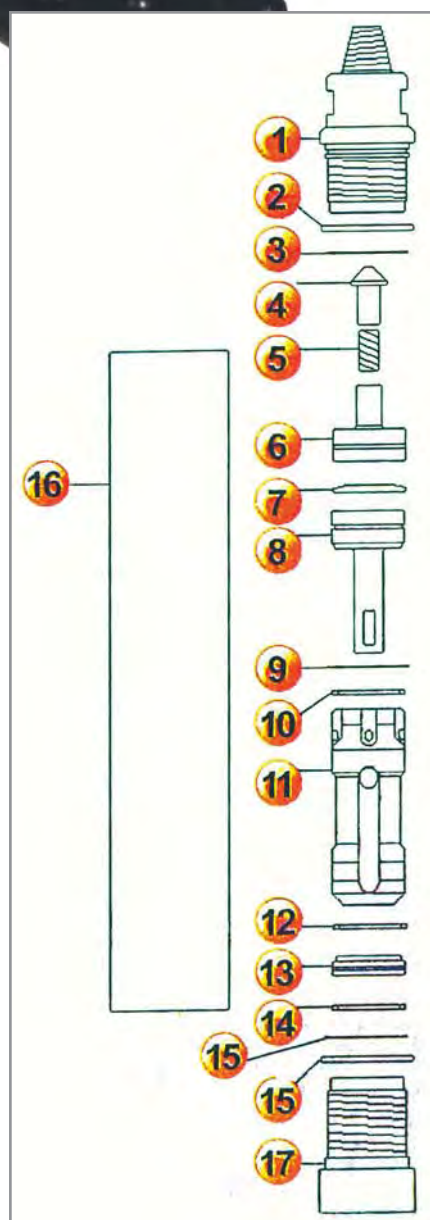


SPÉCIFICATION MARTEAU		CONSOMMATION D'AIR			
POIDS	675 KG	PSI	BAR	CFM	M ³ /min
LONGUEUR	1800 mm	150	10,3	1021	30
Ø EXTÉR. DU CYLINDRE	273 mm	200	13,8	1650	47
Ø DE PISTON	216 mm	250	17,2	2100	59
POIDS DU PISTON	125 Kg	300	20,7	2550	71
COURSE DU PISTON	127 mm	350	24,0	2900	82

EMMANCHEMENT- MISSION SD 12/DHD 112



REPÈRE	DESCRIPTION	RÉFÉRENCE N°
1	BACKHEAD	OC-01-12
2	CHECK VALVE	OC-02-12
3	VALVE SPRING	OC-03-12
4	AIR DISTRIBUTOR	OC-04-12
5	SPRING B.	OC-05-12
6	CONTROL TUBE	OC-06-12
7	RETAINING RING	OC-07-12
8	PISTON	OC-08-12
9	RETAINING RING	OC-09-12
10	GUIDE BUSH	OC-10-12
11	BIT RETAINING RING	OC-11-12
12	CHUCK	OC-12-12
13	O-RING	OC-13-12
14	O-RING	OC-14-12
15	O-RING	OC-15-12
16	CYLINDER	OC-15-12



MARTEAU STABILISATEUR 6

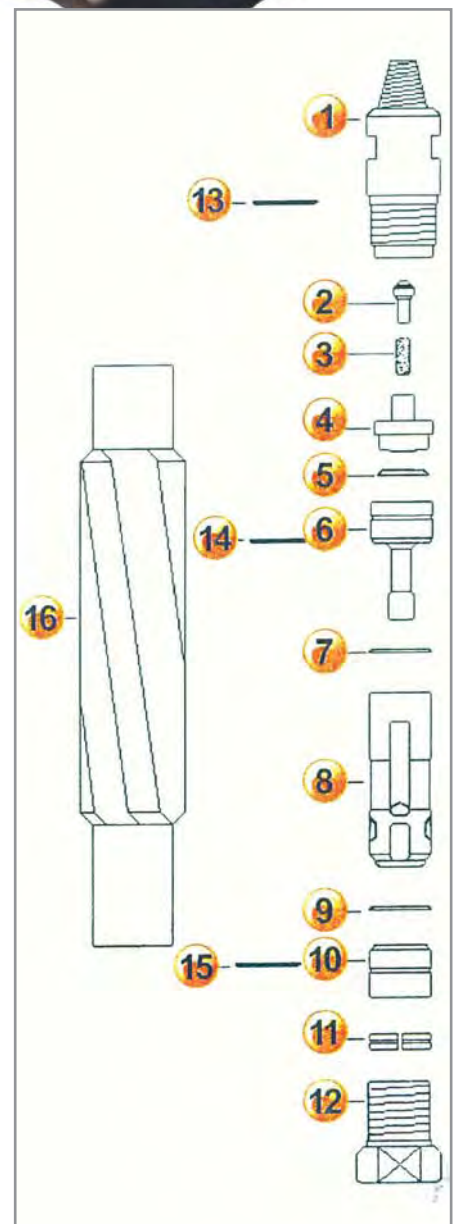
PMK

634 700 712

PMK 634 - 700 - 712 STABILIZED

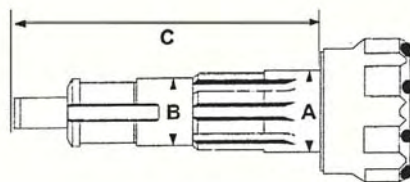


SPÉCIFICATION MARTEAU		CONSOMMATION D'AIR			
POIDS	136/150/164 KG	PSI	BAR	CFM	M3/min
LONGUEUR	1283 mm	150	10,3	329	9,31
Ø DU STABILISATEUR	165/174/182 mm	200	13,8	509	14,4
Ø EXTÉR. DU CYLINDRE	145 mm	250	17,2	707	20,0
PRESSION MAX. DE TRAVAIL	24 BAR	300	20,7	930	26,3
FILTAGE MÂLE	3"1/2 API REG	350	24,0	1034	38,0



EMMANCHEMENT - MISSION SD6/DHD 360 / QL 60

PMK 634	D 171 mm (6"3/4)
PMK 700	D 180 mm (7")
PMK 712	D 190 mm (7"1/2)



REPÈRE	DESCRIPTION	RÉFÉRENCE N°
1	BACKHEAD	OC-01-634
2	CHECK VALVE	OC-02-634
3	VALVE SPRING	OC-03-634
4	AIR DISTRIBUTOR	OC-04-634
5	SPRING B.	OC-05-634
6	CONTROL TUBE	OC-06-634
7	RETAINING RING	OC-07-634
8	PISTON	OC-08-634
9	RETAINING RING	OC-09-634
10	GUIDE BUSH	OC-10-634
11	BIT RETAINING RING	OC-11-634
12	CHUCK	OC-12-634
13	O-RING	OC-13-634
14	O-RING	OC-14-634
15	O-RING	OC-15-634
16	CYLINDER	OC-15-634

Autres emmanchements sur demande